

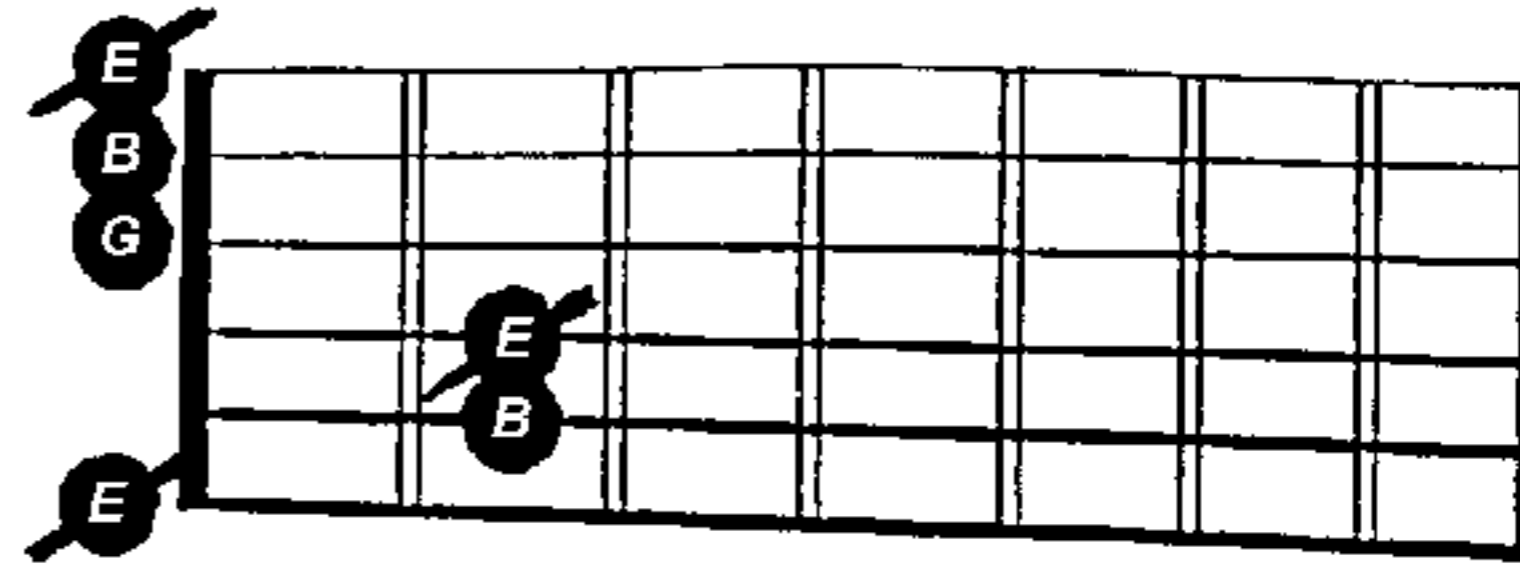
# MOVING CHORDS

All chords change when you move them UP (→) or DOWN (←).

Here we have a basic Minor chord shape that can be moved anywhere on the neck, The Naming note is the note shaped like saturn (♁).

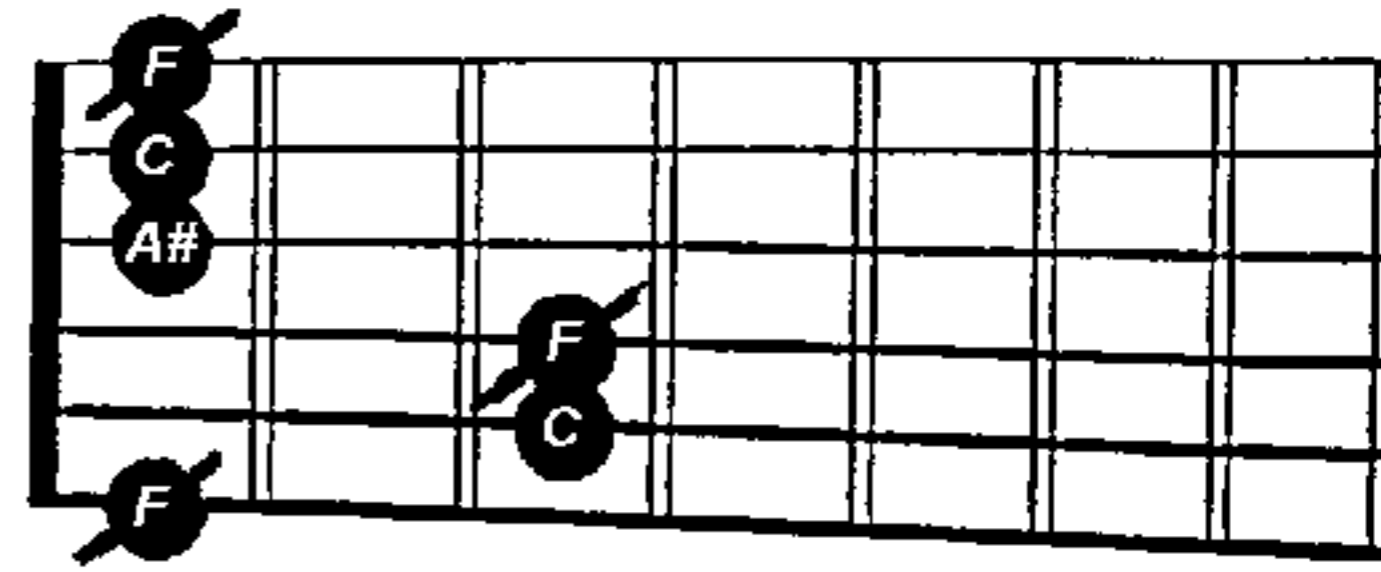
HERE IS THE "E" MINOR CHORD  
(the *naming* ♁ note is "E")

"E"  
MINOR



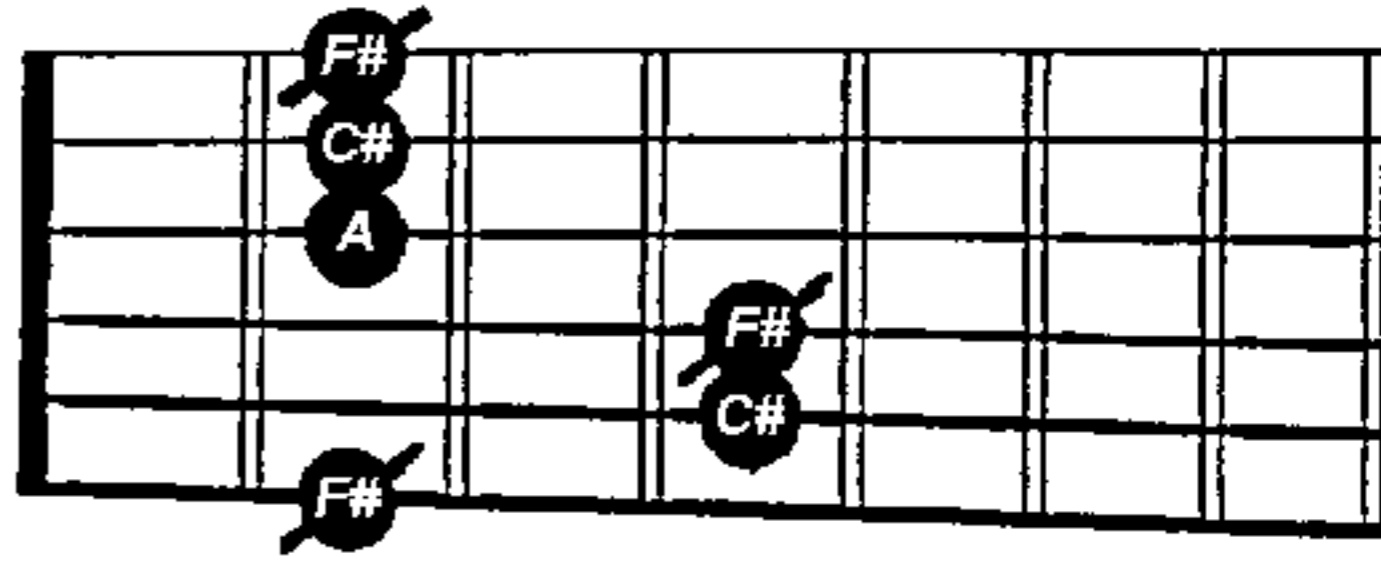
HERE IS THE "E" minor CHORD MOVED UP ONE FRET. (space)  
(the *naming* ♁ note is "F")

"F"  
MINOR



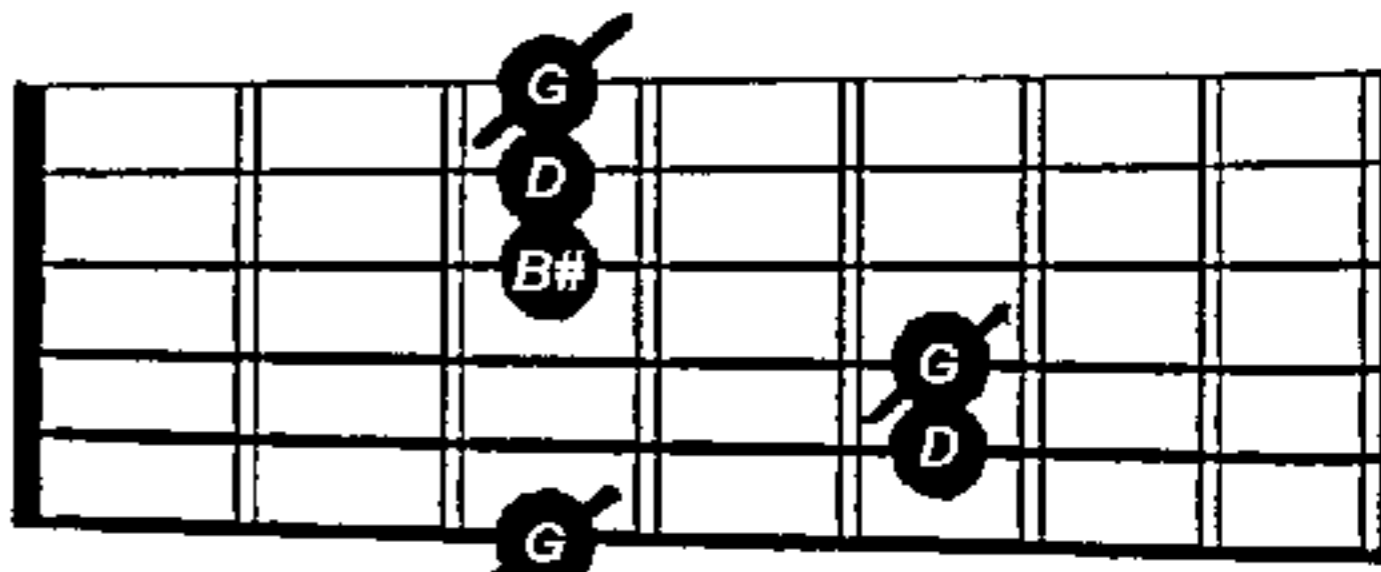
HERE IS THE "E" minor CHORD MOVED UP TWO FRETS.  
(the *naming* ♁ note is F# or Gb)

"F#"  
MINOR



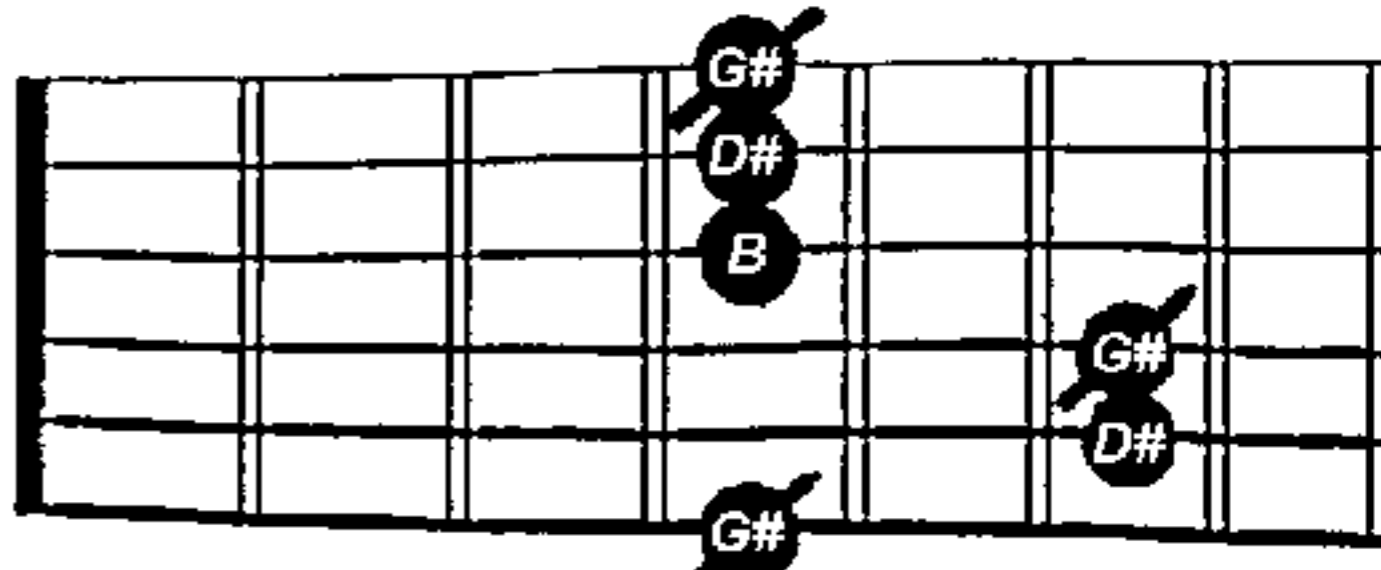
HERE IS THE "E" minor CHORD MOVED UP THREE FRETS.  
(the *naming* ♁ note is "G")

"G"  
MINOR



HERE IS THE "E" minor CHORD MOVED UP FOUR FRETS.  
(the *naming* ♁ note is "G#" or "Ab")

"G#"  
MINOR



HERE IS THE "E" minor CHORD MOVED UP FIVE FRETS.  
(the *naming* ♁ note is "A")

"A"  
MINOR

